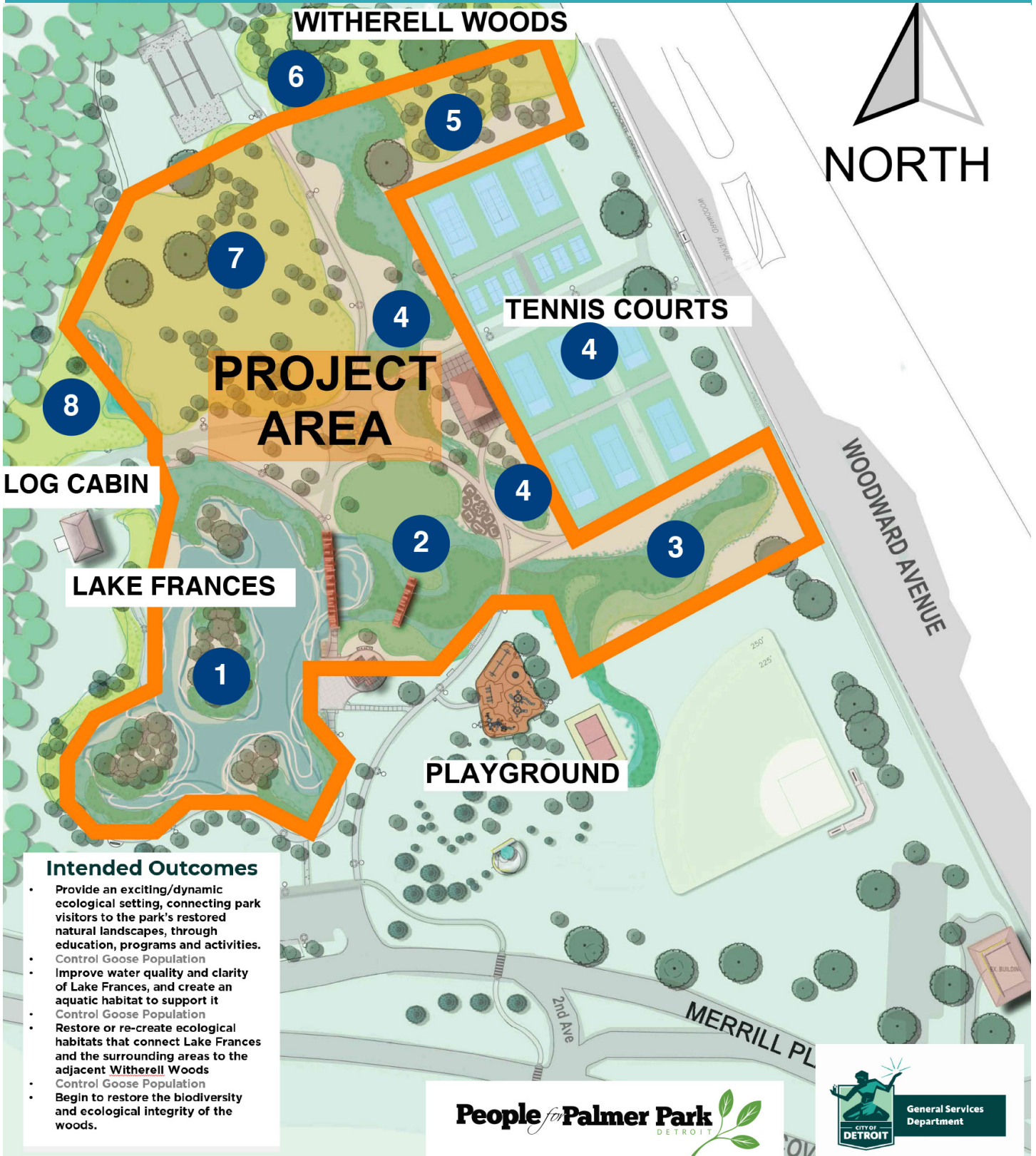


Palmer Park Habitat Restoration Project

peopleforpalmerpark.org/habitat-project.html



PROJECT AREA

NORTH

LOG CABIN

LAKE FRANCES

TENNIS COURTS

PLAYGROUND

- Intended Outcomes**
- Provide an exciting/dynamic ecological setting, connecting park visitors to the park's restored natural landscapes, through education, programs and activities.
 - Control Goose Population
 - Improve water quality and clarity of Lake Frances, and create an aquatic habitat to support it
 - Control Goose Population
 - Restore or re-create ecological habitats that connect Lake Frances and the surrounding areas to the adjacent Witherell Woods
 - Control Goose Population
 - Begin to restore the biodiversity and ecological integrity of the woods.



Palmer Park Habitat Restoration Project

peopleforpalmerpark.org/habitat-project.html



PALMER HABITAT PROJECT CONSTRUCTION TIMELINE													PALMER HABITAT PROJECT CONSTRUCTION TIMELINE										
DATE	2023												DATE	2024									
	JAN	FEB	MARCH	APRIL	MAY	JUNE	JULY	AUGUST	SEPT	OCTOBER	NOV	DEC		JAN	FEB	MARCH	APRIL	MAY	JUNE	JULY	AUGUST	SEPT	OCTOBER
CONSTRUCTION ACTIVITIES			BREEDING AND SITE PREP		NO VISIBLE CONSTRUCTION ACTIVITY - COMPLETION AND FINALIZATION CONSTRUCTION DOCUMENTATION		SITE CONSTRUCTION, GRADING AND PROJECT PLANTING			SEASONAL CONSTRUCTION SHUT DOWN			CONSTRUCTION ACTIVITIES	SEASONAL CONSTRUCTION SHUT DOWN		FINAL PLANTINGS TO BE COMPLETED						WATERING AND CULTIVATION	

- 1 LAKE FRANCES**
 1. Drain and dredge Lake Frances.
 2. Clean the lake and restore lake ecology.
 3. Naturalize the shoreline for improved ecology and to limit goose activity.
 4. Provide habitat for birds and pollinators.
- 2 EXPANDED NATURAL AREAS**
 1. Provide expanded natural areas for improved ecology, storm water management and habitat for birds and pollinators.
 2. Reduce open lawn areas to limit goose activity.
 3. Provide lawn open space for programmatic activities and connectivity to adjacent assets.
- 3 DREDGE MATERIAL**
 1. De-Water dredge material
 2. Determine the final characterization of material.
 3. Use material to berm area adjacent to tennis courts and provide expanded natural areas for improved ecology, storm water management and habitat for birds and pollinators.
- 4 TENNIS COURT DRAINAGE**
 1. Preparing plans to direct, slow down and infiltrate storm water collected from the tennis courts to adjacent bio-swales.
 2. This work is not anticipated to be budgeted through this project phase.
- 5 WETLAND**
 1. This area historically was a wetland.
 2. Due to the failure of golf course era drainage this area has been re-establishing as a wetland.
 3. Remove and manage invasive species in this location.
- 6 WITHERELL WOODS**
 1. Witherell Woods is a remnant forest meaning it has been untouched by development except for drainage that historically ran through the woods to reduce flooding on the adjacent golf courses.
 2. Develop a maintenance and stewardship strategy to improve, reforest and restore the woods ecology over time.
 3. Provide habitat for Birds and Pollinators
 4. Encourage visibility, walk-ability and connectivity through the woods by clearing invasive species and adding educational and directional signage.
- 7 LET IT GROW ZONE**
 1. Limit mowing in this area to restore natural upland ecology.
 2. Provide habitat for birds and pollinators.
- 8 EXPAND EVENT/LAWN AREA**
 1. Clear Invasive species, re-grade as required and provide expanded lawn and open space for programmatic activities and connections to the parks adjacent assets and amenities.